



THE RUMA

HOTEL AND RESIDENCES



THE RUMA HOTEL AND RESIDENCES

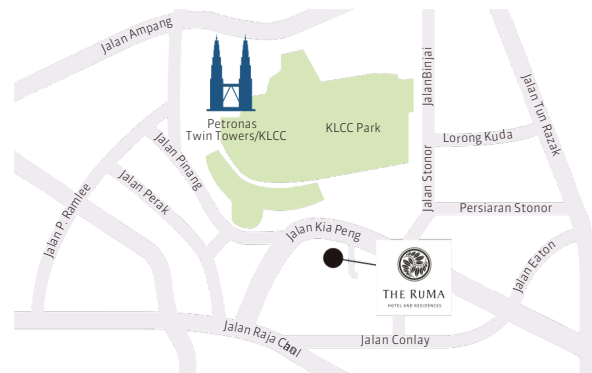
7 Jalan Kia Peng, 50450 Kuala Lumpur, Malaysia

T +60 3 2778 0888

information@theruma.com

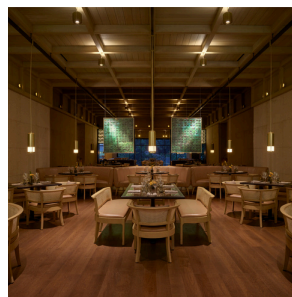
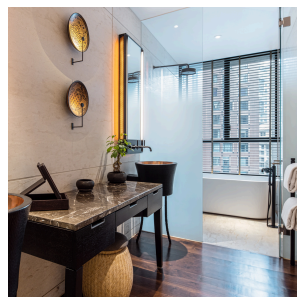
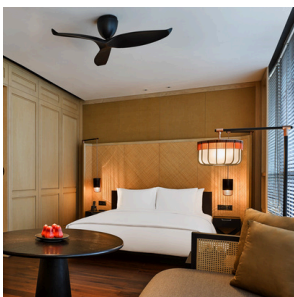
www.theruma.com

www.urbanresortconcepts.com



The Ru Ma means home in its most literal sense. It is a hotel that captures all the intimacy of a home, run by an accomplished host. A stay will inspire you to uncover the city's origins and colonial heritage in a contemporary and luxurious setting that exudes the soothing qualities of a true Urban Resort. You'll be charmed by a host and a guest experience unlike any in the region today. Once you arrive at The Ru Ma Hotel and Residences you enter a world that revolves around you.

- 253 luxuriously appointed guest rooms and suites
- "ATAS"
- "SEVEN" - Lobby Bar
- "The LIBRARI"
- "UR SPA" - Modern Science. Ancient Healing.
- "SANTAI" - Pool Bar and Lounge
- Meeting Space for up to 180 guests



Location

Directions

- Located on Jalan Kia Peng in the "Golden Triangle", Kuala Lumpur's commercial, shopping and entertainment hub
- 60-minute car ride from Kuala Lumpur International Airport (KLIA) and KLIA2
- 20-minute car ride from Kuala Lumpur Sentral Station

Places of Interest

- Petronas Twin Towers (1 km)
- Dewan Filharmonik Petronas (1 km)
- Suria KLCC Shopping Mall (1 km)
- Kuala Lumpur Convention Centre (500 m)
- KLCC Park (500 m)
- Aquaria KLCC (500 m)
- Karyaneka Malaysian Craft (1 km)
- Pavilion Kuala Lumpur & Bukit Bintang Shopping District (1.2 km)
- Kuala Lumpur Tower (2.5 km)
- KL Forest Eco Park (2.7 km)
- Central Market & Chinatown (4 km)
- Royal Museum (5 km)
- Merdeka Square (5.5 km)
- National Mosque of Malaysia (6.7 km)
- Tunku Abdul Rahman Putra Memorial (6.7 km)
- Perdana Botanical Gardens (7 km)
- National Museum (7 km)
- KL Bird Park (8.4 km)
- Batu Caves (15 km)

Accommodation

Room Category

- Deluxe Room (43m²)
- Grand Room (45m²)
- Corner Studio – City View (45m²)
- Corner Studio – Twin Tower View (45m²)
- Grand Studio (48m²)
- 2 Bedroom Family Studio (90m²)
- Deluxe Suite (60m²)
- Grand Suite (88m²)
- 2 Bedroom Deluxe Suite (110m²)
- RuMa Suite (111m²)
- 2 Bedroom RuMa Suite (172m²)

Room Amenities and Benefits

- Bedroom and bathroom separable by a floor-to-ceiling screen
- Designated lounge, work and dining area
- Complimentary stocked minibar with daily replenishment
- High-definition television with screen mirroring capability
- Twin vanity basins
- Oval soaking bathtub with separate rainforest shower
- Automated blackout roller blind
- Nespresso coffee machine
- Traditional tea set
- Personal safe
- King and Twin bedding
- Sumptuous 330-thread count Egyptian cotton bed linen
- Complimentary best in class Wi-Fi
- Complimentary breakfast
- Complimentary local telephone calls
- Welcome drink of choice

Dining

- ATAS
- SEVEN Lobby Bar
- SANTAI Pool Bar and Lounge
- The LIBRARI
- VERANDAH al fresco dining
- In-room dining

Facilities

- Infinity pool
- Outdoor sun deck
- 24-hour state-of-the-art gym
- UR SPA



THE LIBRARI



SEVEN LOBBY BAR



ATAS

The LIBRARI

The LIBRARI is a sensorial space where guests can voyage through time by discovering artefacts and flea market antiques from the Kuala Lumpur of yesteryear alongside vintage magazines and intriguing books on culture, design and architecture, while savouring afternoon tea, snacks and light meals with international flavours.

Open daily from 10:00 – 00:00

SEVEN Lobby Bar

Nestled in the cosy, light-filled conservatory adjoining the hotel lobby, SEVEN Lobby Bar is the perfect space to reconnect and recentre over hand-crafted drinks. Choose from 77 different gins sourced from all corners of the earth, paired with an assortment of seven tonics and garnished with a spice, herb or fruit of your choosing.

Open daily from 10:00 – 00:00

ATAS

Located on the mezzanine floor, ATAS is A Modern Tribute to Malaysian Cuisine, where every bite is a refined expression of heritage, creativity, and skill. The open kitchen is surrounded by the main dining room, the al fresco VERANDAH, and a semi-private dining space.

Lunch Daily 12:00 – 14:30

Dinner Daily 18:00 – 22:00



SANTAI Pool Bar and Lounge

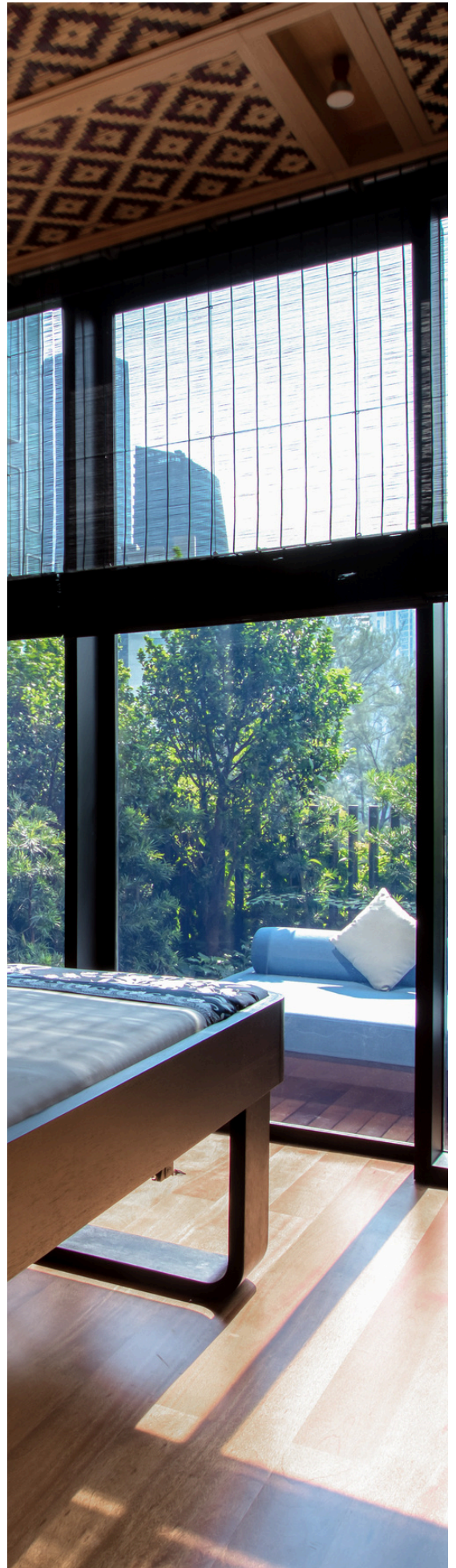
Opening up to the Kuala Lumpur skyline from the 6th floor, SANTAI Pool Bar and Lounge is a laid-back alcove where the black- and gold-graded infinity pool cantilevers over the building's edge to offer dreamscape views from above. Guests can take a leisurely dip before unwinding on the sun-soaked chaise lounges and sofa beds that dot the pool deck, while a terrace meeting room is available for discussions of a more relaxed nature.

Open daily from 10:00 – 00:00

UR SPA

Presiding over half of the 6th floor and connected to the hotel's pool and lounge area is the resplendent UR SPA, an exclusive space for relaxation and result-driven wellness. Six treatment rooms offer a minimalist, tropical reprieve.

Open daily from 10:00 – 21:00



Meetings and Events

More than a hotel, The RuMa Hotel and Residences is host to a charming local scene. The hotel offers a variety of spaces for both corporate meetings and social gatherings, from indoor board and meeting rooms equipped with state-of-the-art audio-visual technology to an outdoor terrace meeting space enveloped by the Kuala Lumpurian sun. All events are curated and executed entirely bespoke by a dedicated events manager to guarantee the success of your event at The RuMa Hotel and Residences.

Function / Meeting Room Size Chart

FUNCTION ROOM	ROOM SIZE		CEILING		DIMENSIONS (m)	
	ft ²	m ²	ft	m	length	width
MEZZANINE FLOOR						
Bilik I & II	1885	175	9'8"	3	13.6	14.8
Bilik I	1077	100	9'8"	3	13.6	7.3
Bilik II	808	75	9'8"	3	10.2	7.5
Bilik III	463	43	9'5"	2.9	7.2	3.9
LEVEL 6						
SANTAI Pool Bar and Lounge	4091	380	13'1"	4	26	39.4
The Pavilion	1519	141	13'1"	4	19.3	7.4
Pavilion I	711	66	13'1"	4	9.1	7.4
Pavilion II	808	75	13'1"	4	10.2	7.4
LEVEL 6M						
Board Room	496	46	7'8"	2.4	9.5	4.5

Function / Meeting Room Capacity Chart

FUNCTION ROOM	Banquet	Cocktail	Classroom	Theatre	Boardroom	U-Shape
MEZZANINE FLOOR						
Bilik I & II	100	100	-	-	-	-
Bilik I	60	80	45	80	32	30
Bilik II	40	50	27	50	24	24
Bilik III	-	-	-	-	14	-
LEVEL 6						
The Pavilion	80	120	63	120	36	36
Pavilion I	40	50	27	60	16	18
Pavilion II	40	70	27	70	16	18
LEVEL 6M						
Board Room	-	-	-	-	14	-



THE RUMA HOTEL AND RESIDENCES

7 Jalan Kia Peng, 50450 Kuala Lumpur, Malaysia

T +60 3 2778 0888 information@theruma.com www.theruma.com

A LUXURY HOTEL

Managed by

URBAN RESORT CONCEPTS

LIFESTYLE™
Preferred
HOTELS & RESORTS


VIRTUOSO
PREFERRED